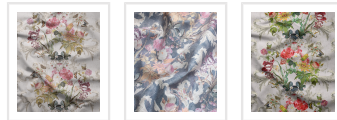


Efflorescence Fabric

Delightfully romantic with nostalgic echoes of visits to country gardens and parks of times past. This design is gentle, romantic and would instantly fill a room with floral beauty and butterflies. This imagery is reminiscent of a giddy springtime day, fun, light and airy with lots of excitement and possibilities to come. Luxurious in its simplicity this palette of delicate colours and uplifting hues will brighten any space, from small and intimate to open spaces hosting large events, perfect for celebrations. Multiple meanings have been attributed to flowers for thousands of years throughout Europe, Asia and the Middle East. Floral blooms, foliage, plants and specific arrangements were used to send a coded messages to special recipients, allowing the sender to express feelings which could not be spoken aloud in polite Victorian society. A beautiful floral fabric.



USAGE	Domestic & Commercial
PER YARD	100cm
SAMPLE SIZE	21cm x 29.7cm
PRINTED WIDTH	135cm
PATTERN REPEAT	45cm V - 67cm H
PRODUCT CODE	FAB-SIM130

SPECIAL NOTES

Our fabric is sold by the vertical metre.

We offer samples for all of our fabrics. Samples are A4 in size (21cm x 29.5cm) to show color and quality. We highly recommend purchasing a sample first to check colors. Please note our samples are pre-cut and intended for color matching purposes, so while they will contain all the colors of the pattern, they may not include full elements of the pattern.

Please note the vertical and horizontal repeats of the various patterns when calculating how many metres you'll need for your project. We recommend overestimating so you don't run out. All Milton & King fabrics are digitally printed on demand and, as a result, color variations may occur from batch to batch. Colors will also vary depending on the selected base cloth so please request a sample for a true representation. Trimming is available on request and at an additional cost.

ADDITIONAL INFO

Fabric Care Instructions

Please view our complete fabric care and stain removal instructions here. This care guide has been compiled to help you select your chosen fabric with confidence and to maintain the feel, comfort and appearance of your fabric throughout its lifetime.


If you have any questions please email or [contact us](#) through one of our many touch points. We're more than happy to help!

Waterproof Upholstery

We can manufacture our designs to meet commercial requirements and more. Including Polyester with Waterproof Backing, Soil Release Finish, and Antibacterial & Antimicrobial. Fabrics designed to resist the rigors of high spillage areas. Contact our trade department to discuss the

MILTON & KING

GENERAL ENQUIRIES, ORDER & PRODUCTS

 (07) 3162 5030

8am - 5pm AEST / Mon - Fri
support@miltonandking.com
www.miltonandking.com/au

possibilities or [schedule a callback](#) with one of our trade representatives at a convenient time for you.